

2025 Summer Logistics Plans

Health Sciences Campus

The following describes the logistics plans for summer construction projects that will impact campus pedestrian and vehicular pathways.

Nursing Classroom Upgrades

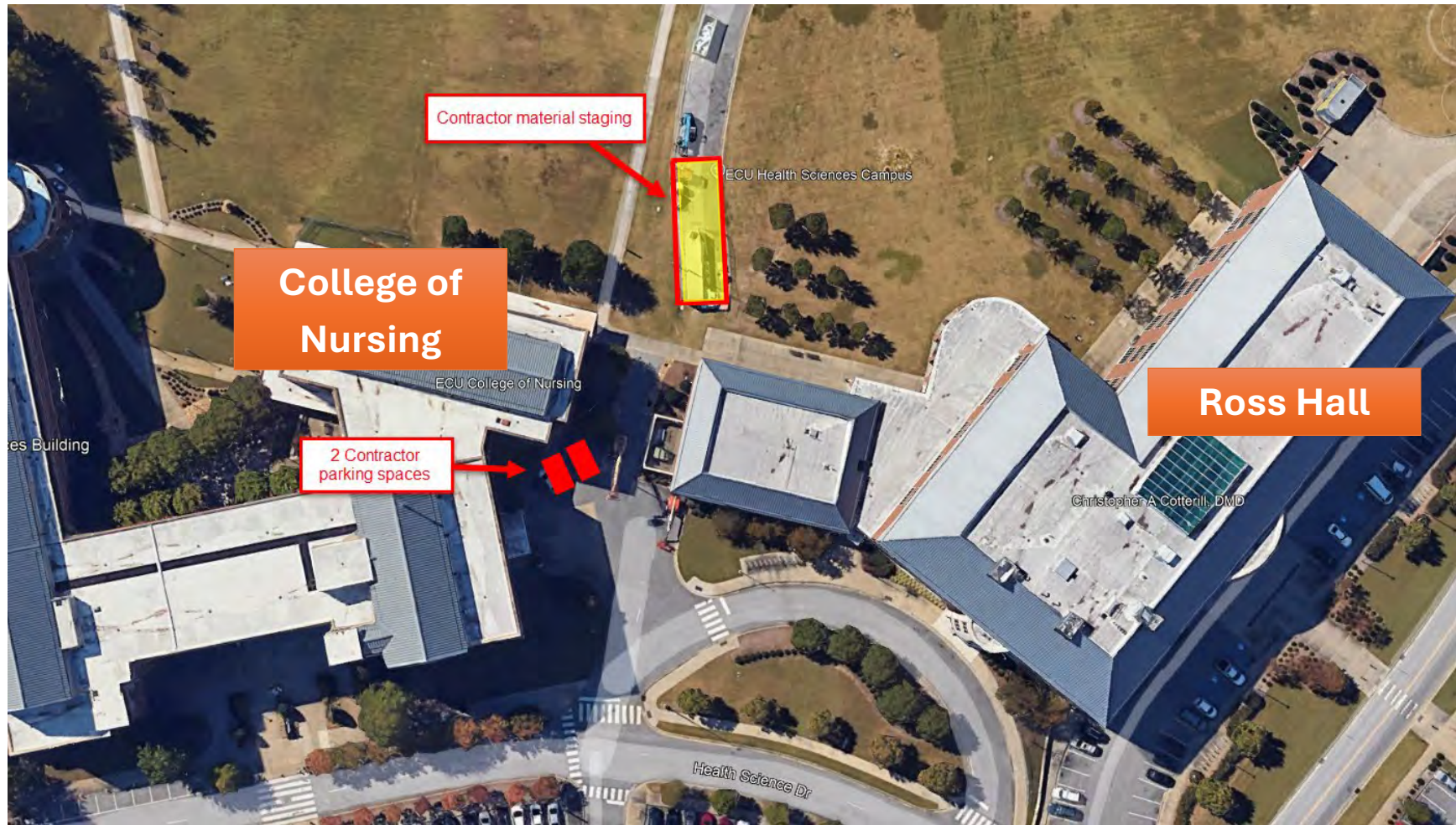
Mobilizing (estimated): May 2025

Contractor: TBD

Project Completion: November 2025

Designer: Davis Kane

PM: Jordan Delia – FEAS



All contractor parking is off site

Biotechnology Upgrade Lab Exhaust System

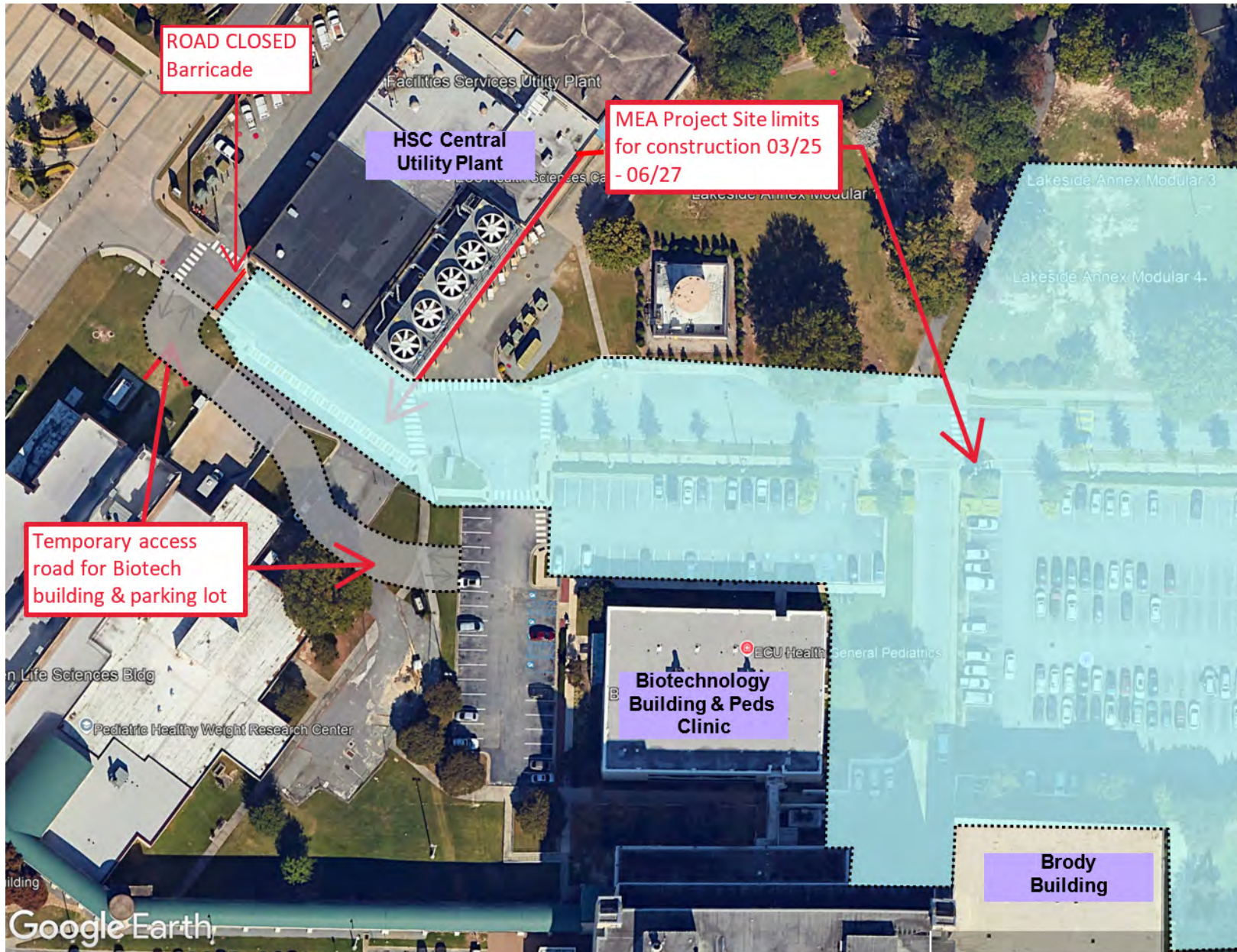
Contractor: Berry Building

Group Designer: Salas O'Brien

Mobilizing (estimated): 5/12/25

Project Completion: 6/24/25

PM: Dan Baker - FEAS



All contractor parking is off site

Various Interior Projects: Minimal impact to pedestrians or vehicles. Minor impact to building occupants.

Anticipated dates for the following:

- **Biotechnology Building Fire Alarm Replacement** – August projected start
- **Brody GE 99 HVAC Unit replacement** – July projected start
- **Warren Life Sciences Extend Sprinkler System** – August projected start
- **Warren Life Sciences Envelope Repairs** - July projected start

All contractor parking is off site

Brody School of Medicine - New Medical Education Building (26 pages)

Contractor: T A Loving, Barnhill, Metcon

Designer: BSA

Mobilizing (estimated): March 2025

Project Completion: July 2027

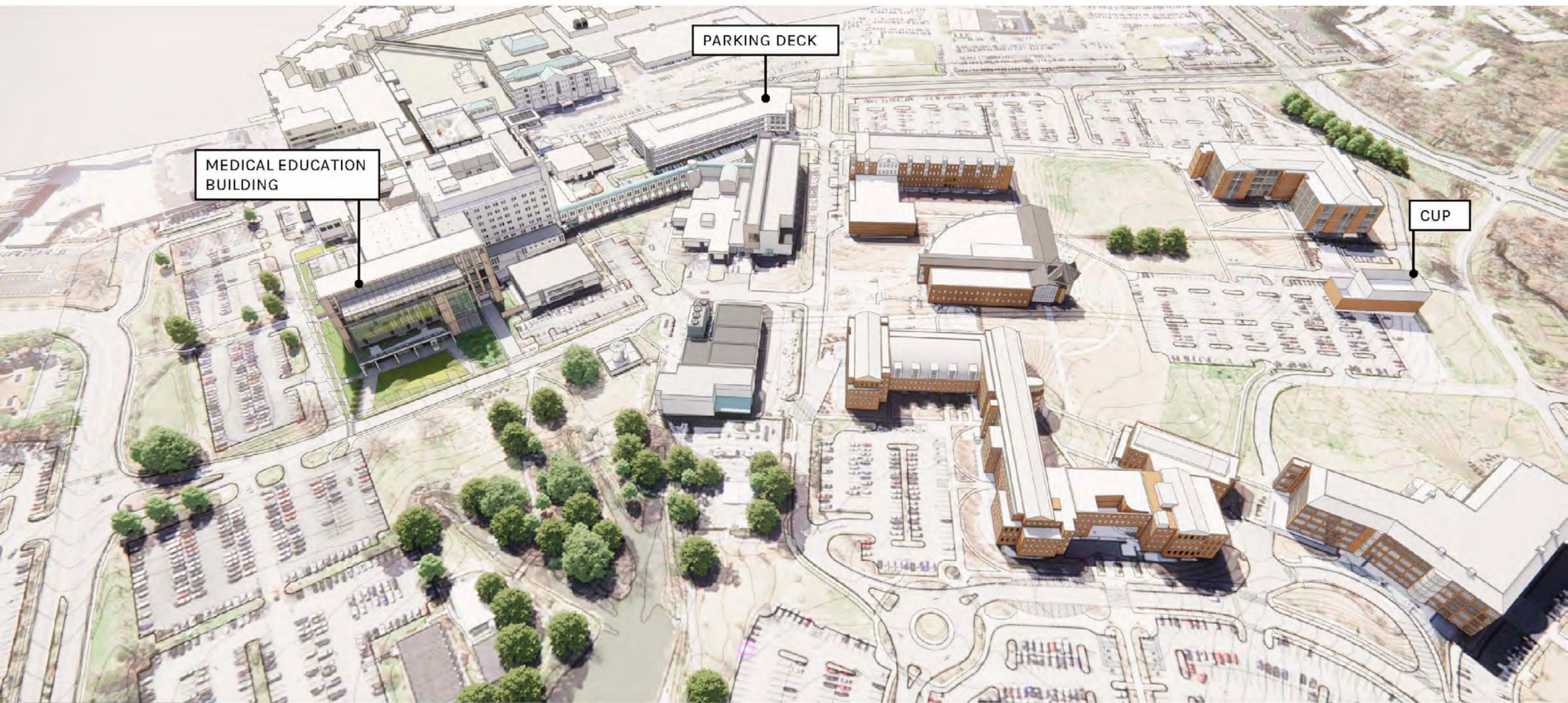
PM: Gina Shoemaker – FEAS

Project Schedule

- Mobilize to Site - March 2025
- Temp Loading Dock Construction - February 2025
- Close Brody Loading Dock - March 2025
- Begin Med Ed Building Construction - March 2025
- Begin Parking Deck Construction - March 2025
- Begin Chiller Plant Construction - Parking lot captured March 2025, Construction start August 2025
- Open Brody Loading Dock - August 2026
- Complete and Open Parking Deck - January 2027
- Complete Open Parking around Chiller Plant - July 2027
- Complete Building - August 2027
- Demobilize from Site - July/August 2027

All contractor parking is off site

Overall Site Plan



1A

ECU
Health

Warren Life
Sciences

Biotech

Chiller Plant

Temporary
Stair Tower

Construction
Fencing

Pedestrian
Routing

1-Way Traffic
with Barriers

Construction
Traffic

Gate

Jobsite Office

Temporary
Crosswalk



March 2025 - July 2027
Mobilization - MEB
Total Duration - 29 Months



1C

Gate

Gate

Construction Traffic

EXISTING (1) 4" C WITH
(4) 1" INNERDUCTS

EXISTING FIBER HH

EXISTING TELECOM HH



March 2025 - July 2027
Establish New Central Utility Plant Site
Total Duration - 29 Months



2A

ECU
Health

Temporary
Loading Dock
(see 2B)

Parking to Remain
Open and Accessible
with Temp Road
**14 Standard &
4 ADA Spaces
Available**

Underpinning at
Existing Building

Loading Dock
Closed

Fencing

Biotech

Warren Life
Sciences

Gravel Lot for
Parking and
Deliveries

May 2025 - March 2026
Parking lot closed until site
utilities / final paving are
complete in this area.

Temporary
Road for
BioTech
Access
April 14th Start

N. Campus Loop


Pedestrian Routing for
Duration of Road
Closure (see 2C)

March 2025 - June 2027
N. Campus Loop closed to
normal traffic.

August 2026, limited access for
loading dock can resume.
Coordinate with JV

TA LOVING
BARNHILL
metcon
BUILDINGS INFRASTRUCTURE

March 2025 - July 2026
Begin Loading Dock Shutdown
1 Month After Mobilization
Total Duration - 16 Months

 **ECU**
BRODY SCHOOL
OF MEDICINE

2B



ECU Health -
Brody
Connector



Temporary
Canopy

ECU
Health

Temporary Loading Dock
Area
*Portable loading dock lift
will be provided for
loading/unloading*

Leo Jenkins

Rolloff Dumpster with
Ramp Access and Gate

March 2025 - June 2027
Temporary Loading Dock
Total Duration - 28 Months

2C



5

Construction Traffic

Gate

Warren Life Sciences

Temporary Road for BioTech Access

March 2025 - June 2027
N. Campus Loop closed to normal traffic.

Pedestrian Access to Clinic and Gamma Knife

No Parking in This Area

Crawler Crane

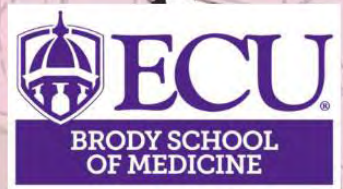
Gate

Heart Dr

Construction Fencing



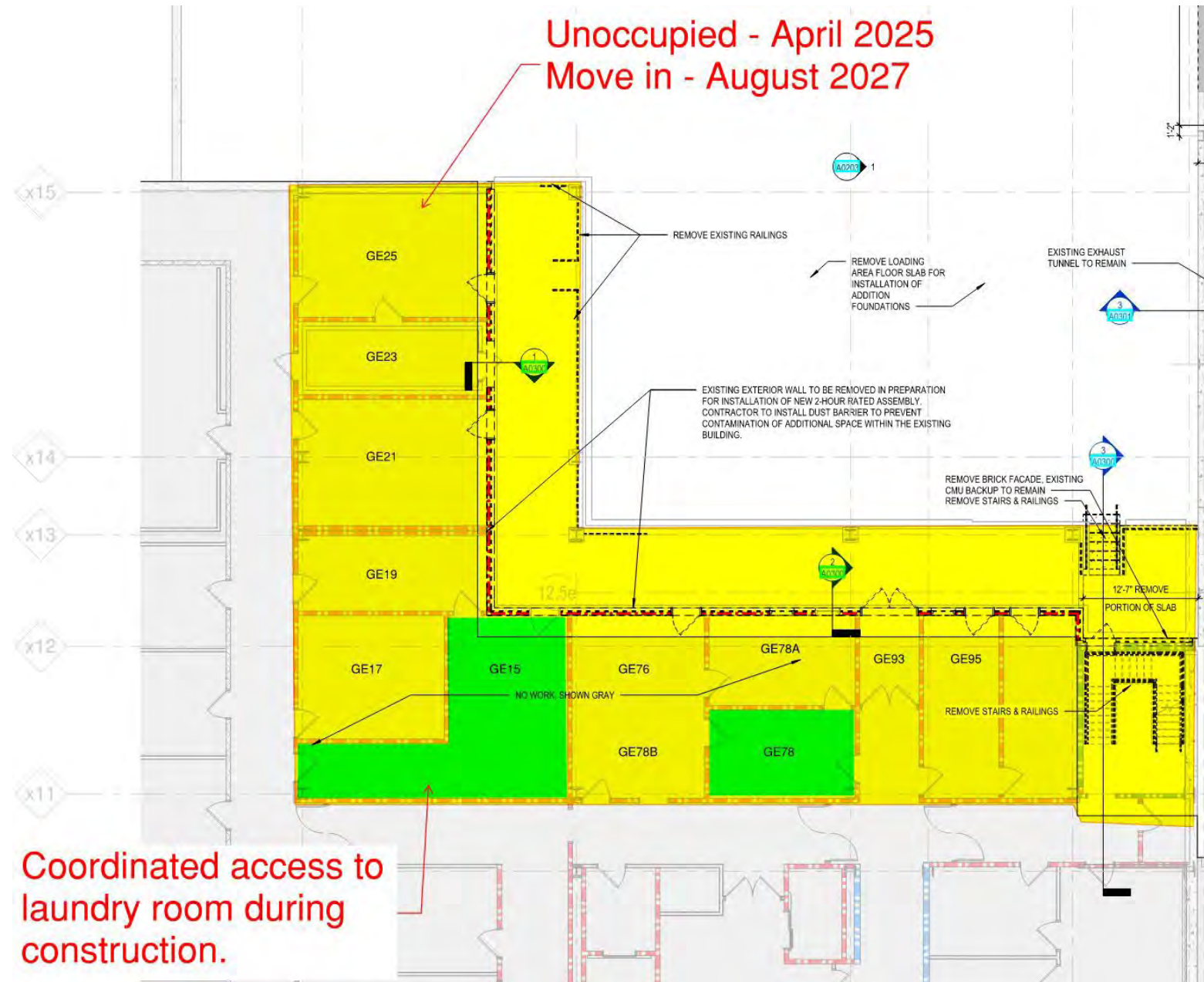
March 2025 - December 2026
Establish Parking Deck Site
Total Duration - 17 Months



Unoccupied - April 2025
Move in - August 2027

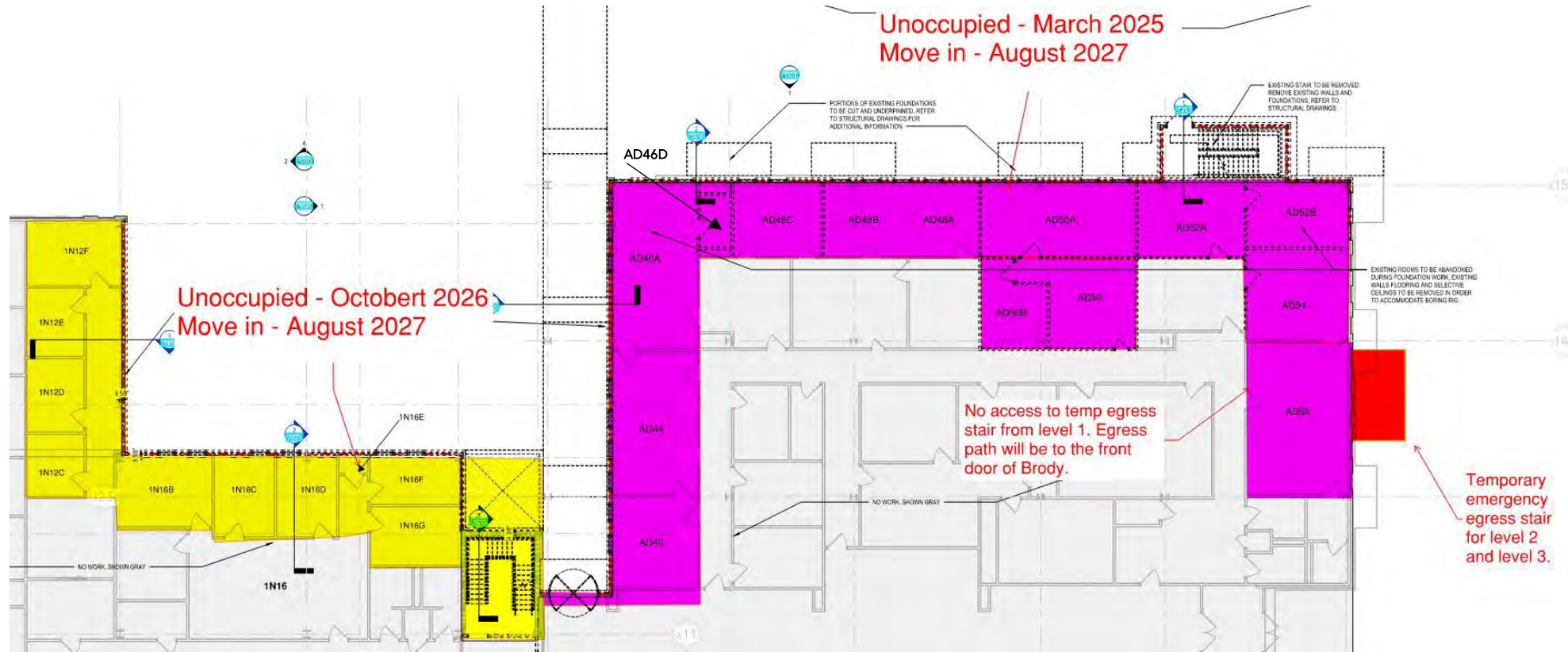
Brody Ground
Floor

Areas to be
unoccupied during
construction

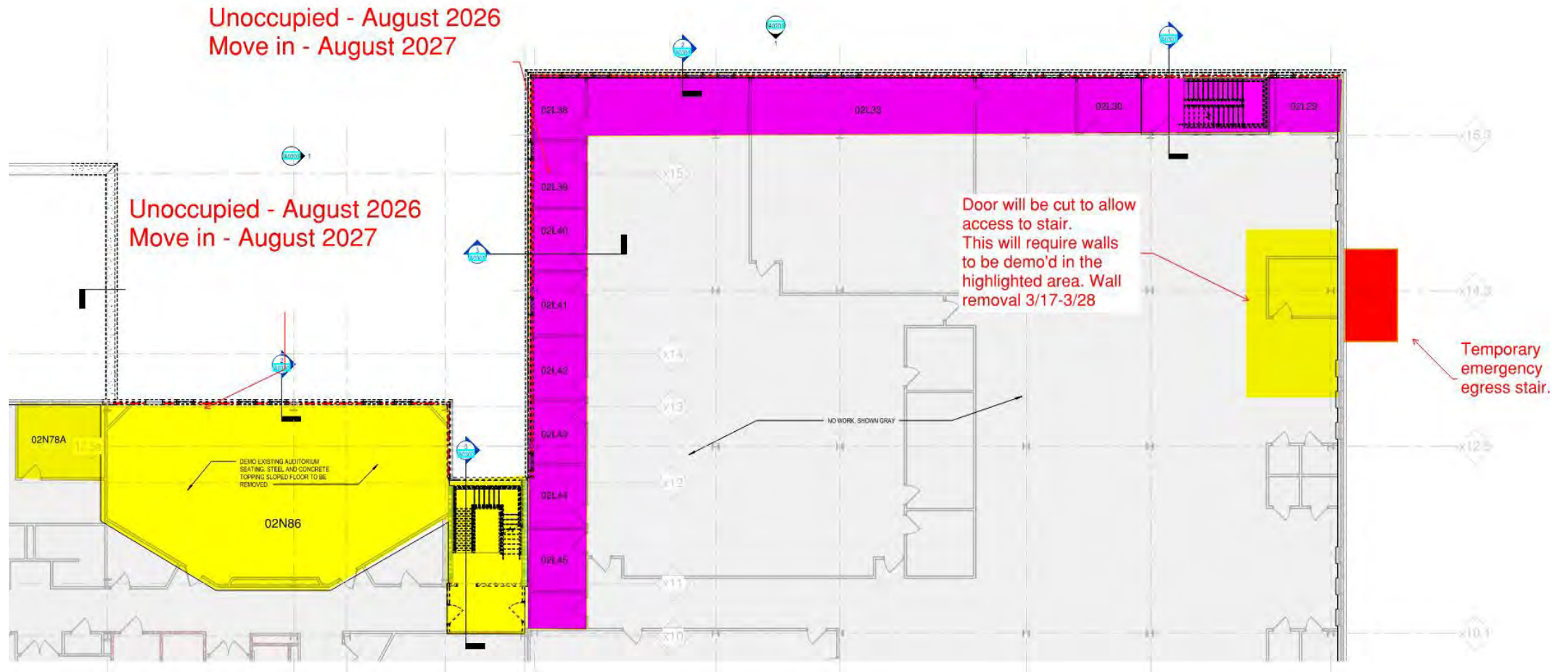


Brody First Floor

Areas to be unoccupied during construction

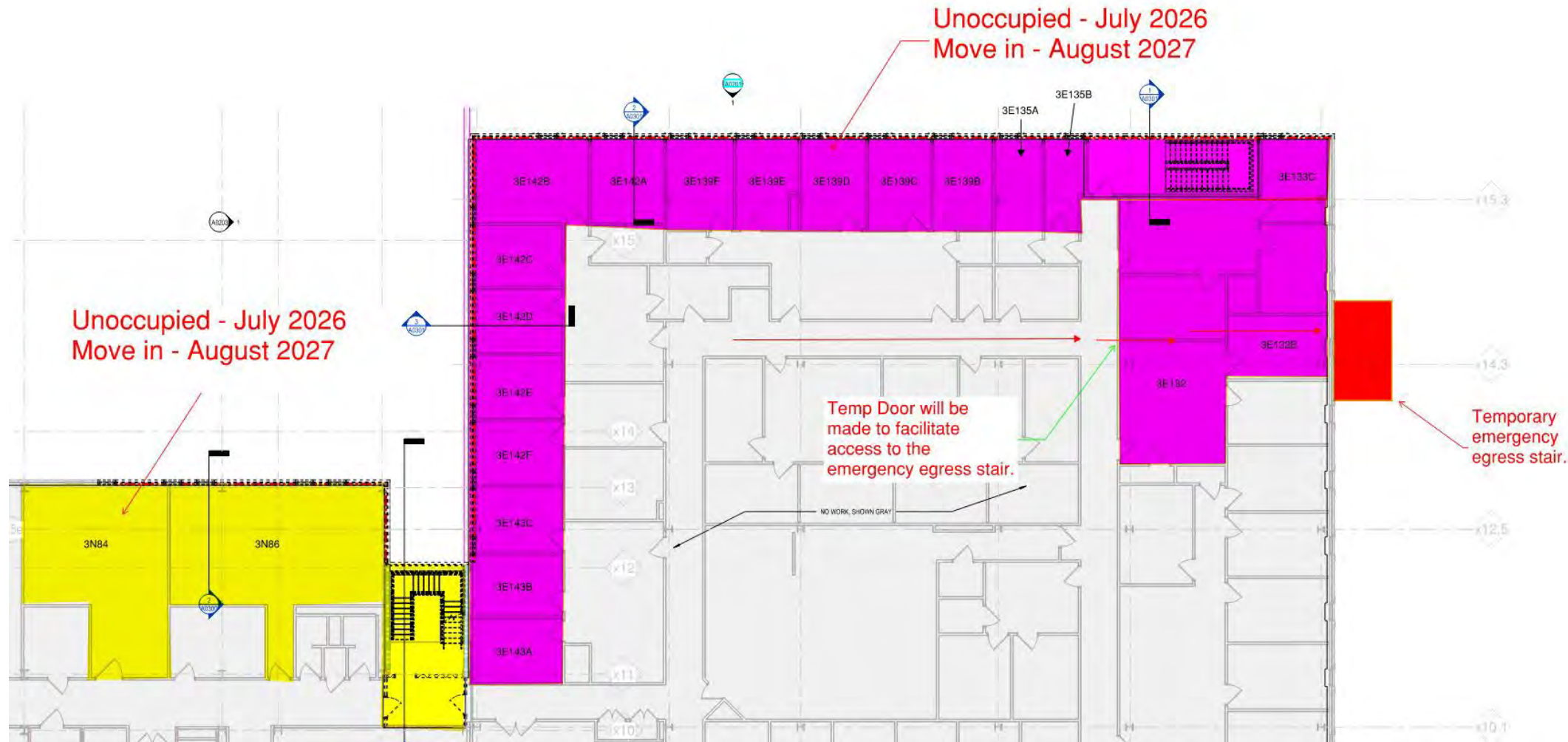


Areas to be
unoccupied
during
construction



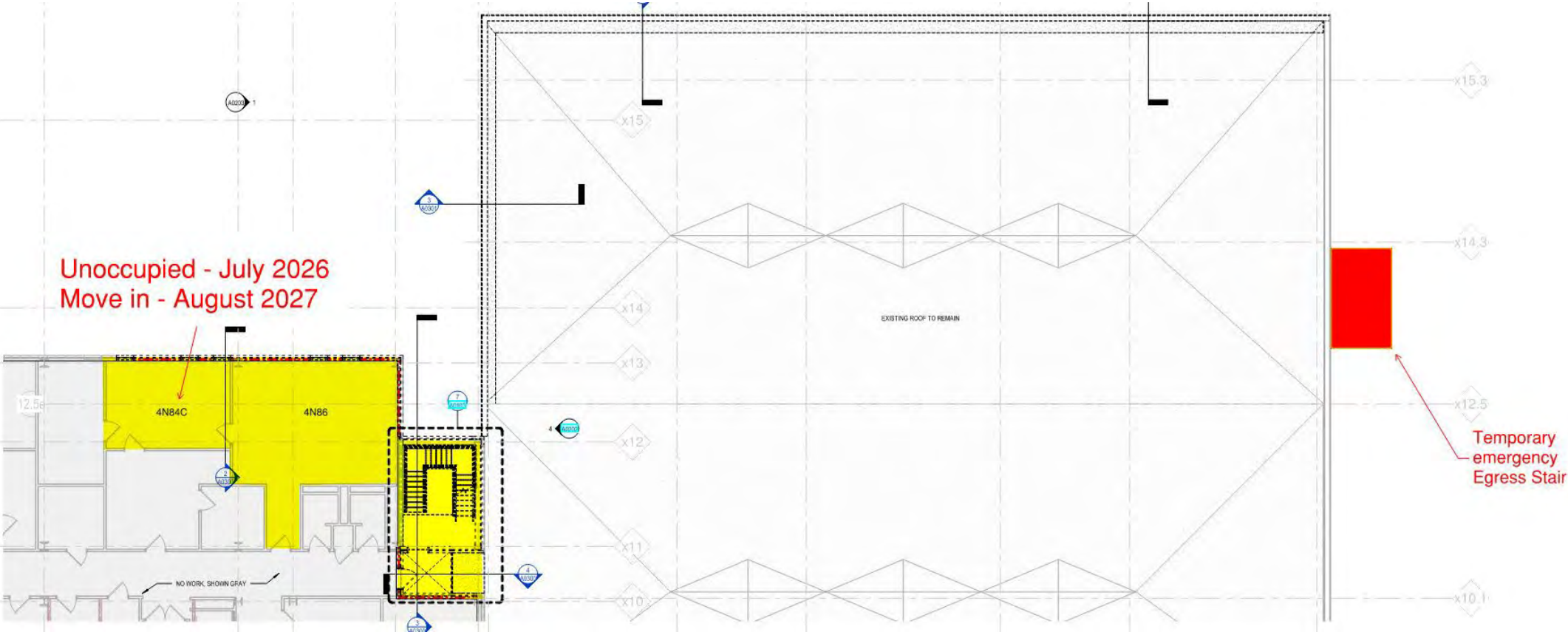
Brody Third Floor

Areas to be
unoccupied
during
construction



Brody
Fourth
Floor

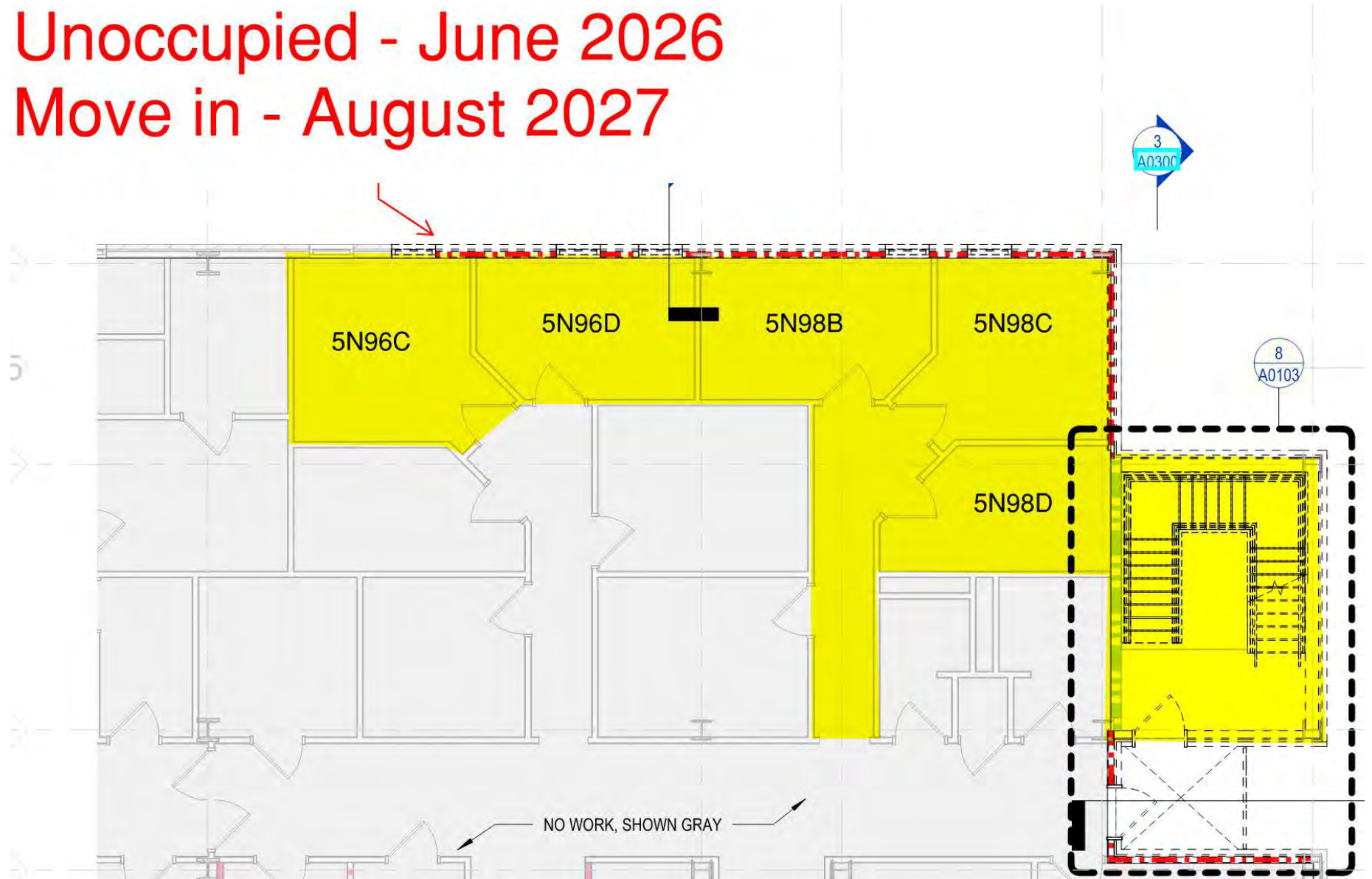
Areas to be
unoccupied
during
construction



Unoccupied - June 2026 Move in - August 2027

Brody
Fifth
Floor

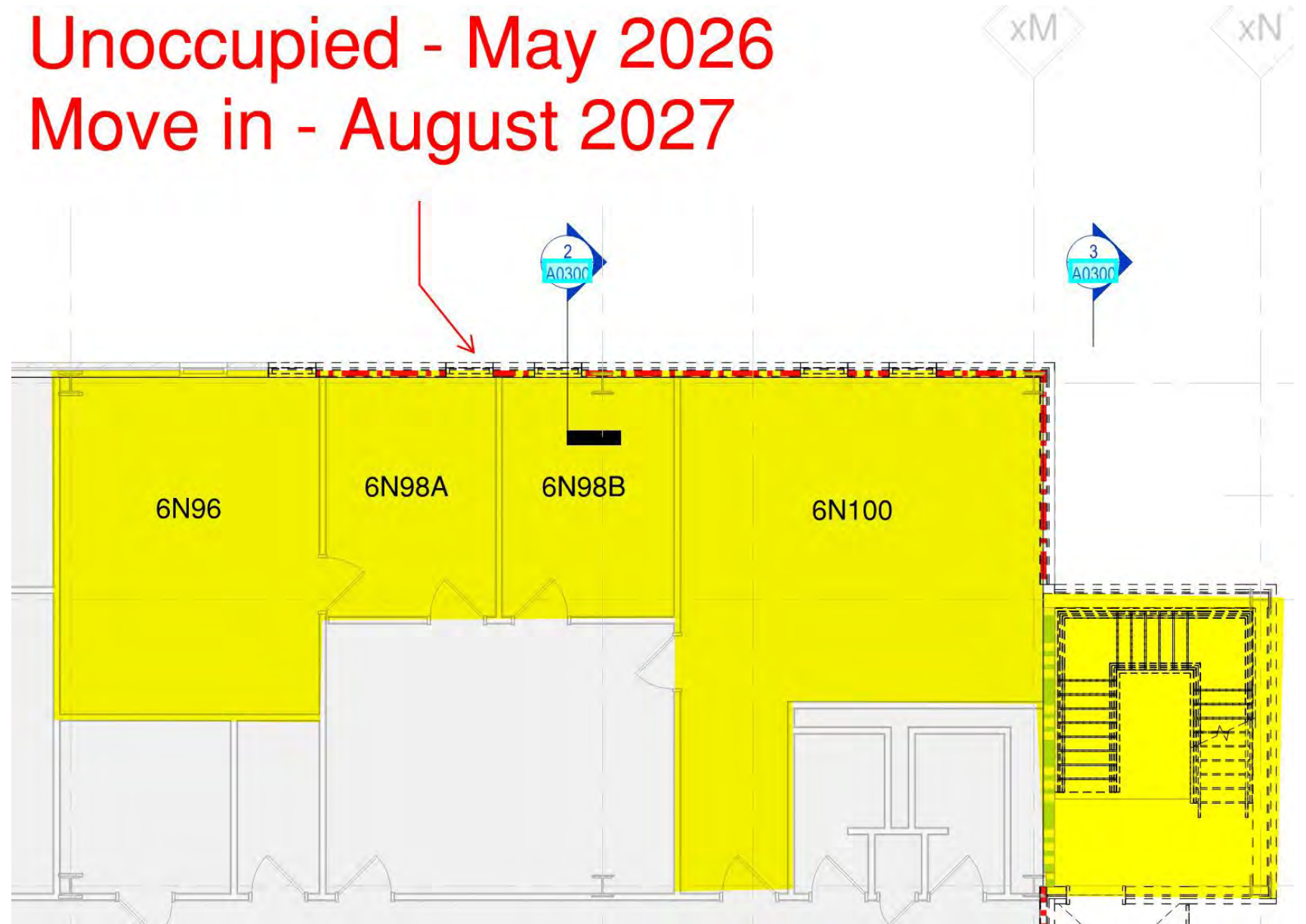
Areas to be
unoccupied
during
construction



Unoccupied - May 2026 Move in - August 2027

Brody
Sixth
Floor

Areas to be
unoccupied
during
construction

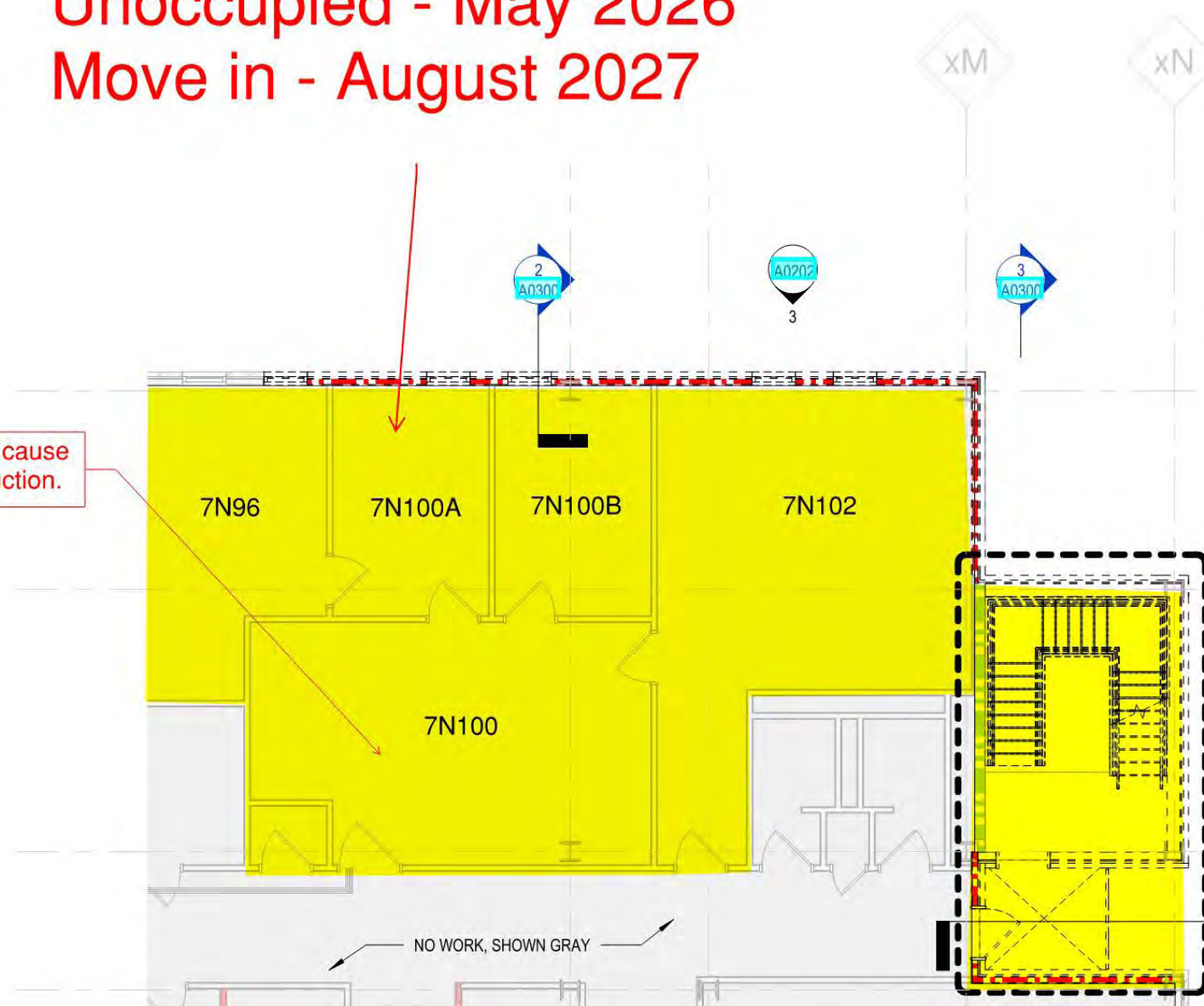


Unoccupied - May 2026
Move in - August 2027

Brody
Seventh
Floor

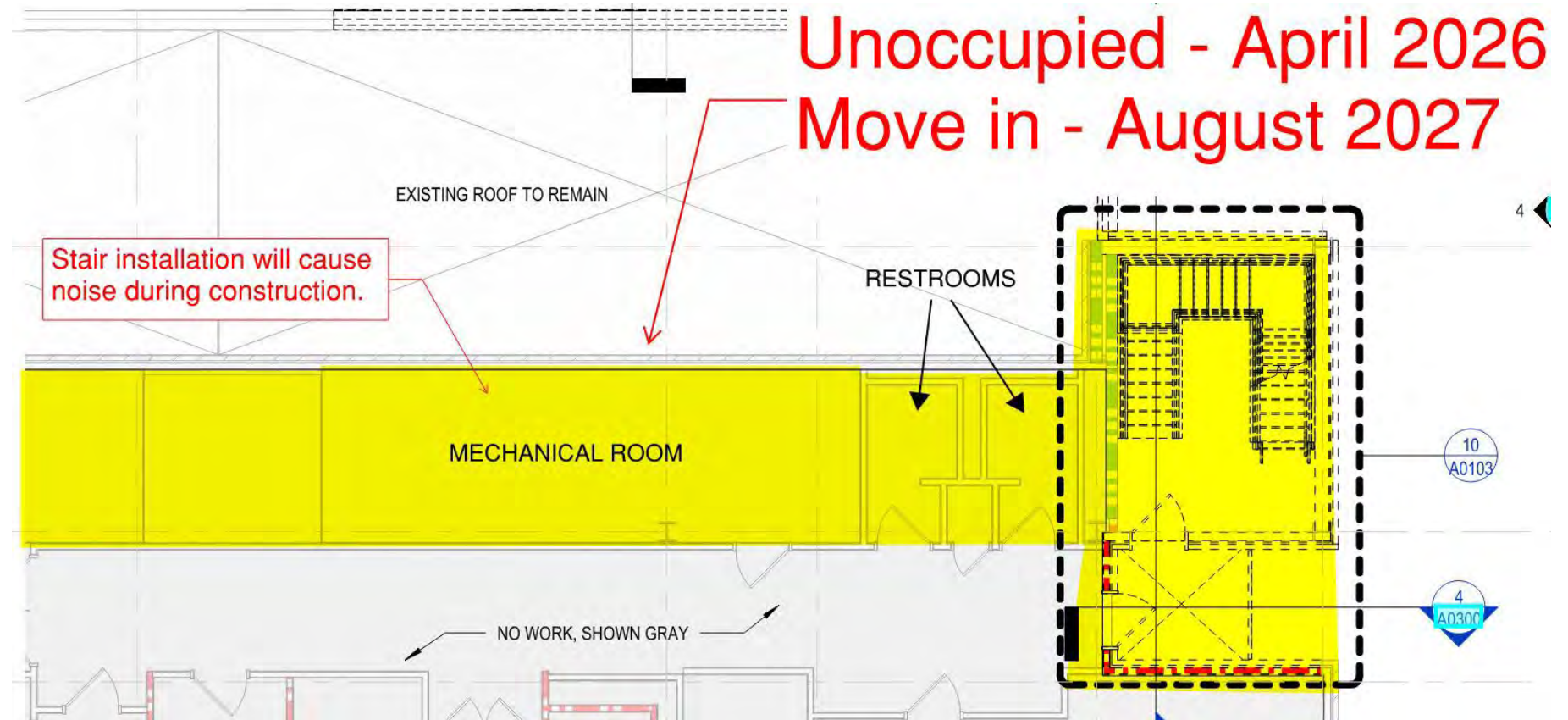
Areas to be
unoccupied
during
construction

Stair installation will cause noise during construction.



Brody
Eighth
Floor

Areas to be
unoccupied
during
construction



Temporary Gravel Parking Lot

Temporary gravel lot with 100 parking spaces between ECU Pediatric Cardiology and ECU Health Family Medicine.



Temporary Gravel Parking Lot

ECU Brody School of Medicine
New Medical Education Building Addition
Parking Shutdown Plan

Temporary
ADA Parking

New Parking Deck
Location

Parking Lot
Permanently Closed

Parking In This Area
Temporarily Closed

To Reopen January
2027

New MEB Site

Parking Lot
Permanently Closed

ADA Parking

Biotech

BioTech and Peds
Parking Temporarily
Closed

Will Reopen March
2026



ECU Brody School of Medicine
New Medical Education Building Addition
Parking Shutdown Plan

Temporary
ADA Parking

New Parking Deck
Location

Parking Lot
Permanently Closed

Parking In This Area
Temporarily Closed

To Reopen January
2027

New MEB Site

Parking Lot
Permanently Closed

Clinic Parking
With ADA
Parking to
Remain Open

Biotech

Warren Life
Sciences

ECU Dumpster

ECHI

Temporary Road
for Biotech and
Clinic Access

Will Reopen March
2026

Will Access From
Temporary Road

N. Campus Loop
closed

To Reopen June
2027

